

The background is a detailed line-art illustration in blue and red. It depicts a variety of industrial and engineering scenes. In the upper left, there's a large industrial fan or turbine. In the center, a female engineer in a hard hat and work shirt stands with her arms crossed. To the right, there's a complex industrial machine with pipes and valves. In the lower left, two male engineers in hard hats are working with a stack of components. In the lower right, two female engineers in hard hats are looking at a tablet. The entire scene is filled with various mechanical parts, pipes, and structural elements, all rendered in a clean, modern line-art style. Red dots are scattered throughout the illustration, often marking specific components or points of interest.

# BUILDING TOMORROW, TODAY

Engineering Solutions  
for a Better World



The background of the slide features three blue polo shirts hanging side-by-side. Each shirt has a white, shield-shaped patch with a blue border and the word "ISGEC" in red capital letters. The shirts are slightly out of focus, with the central one being the most prominent. A red bracket is positioned below the text on the right side of the image.

We strive for  
a sustainable  
future for all  
our partners  
& alliances.



## ● Our story, in these pages

<i>Message from our MD</i>	04
<i>Our Story &amp; Footprints</i>	06
<i>Our Journey &amp; Impact</i>	08
<i>We are known for our excellence in Our Business Verticals</i>	14
<i>Manufacturing</i>	15
<i>Projects</i>	29
<i>Saraswati Sugar Mills</i>	37
<i>Environment, Social &amp; Governance</i>	40
<i>The initiatives that keep us inspired Corporate Social Responsibility</i>	44
<i>Our Joint Ventures &amp; Subsidiaries</i>	46
<i>Sectors We Cater To</i>	48

**Driving  
sustainable  
growth across  
the globe.**





- **We are committed to providing sustainable solutions using our technology for products & services.**

*In 90+ years of our journey to provide highly efficient solutions using the latest technology, we are moving towards providing sustainable solutions.*

*We have transitioned from a sugar manufacturing company to a well-diversified heavy engineering company.*

*Over the decades we have absorbed technologies and developed India specific applications using our engineering and research and development strength. Today, our products and services have transcended borders and are known for excellence and quality.*

*We are continuously pursuing the latest technological advancement through international collaboration, including supply of products and services for decarbonisation, and helping customers to achieve their Sustainable Development goals.*

*Aditya Puri*  
*CEO & Managing Director*



**Sustainability is the core of  
our growth plans—  
we work towards a  
greener tomorrow, today.**



# Our Story & Footprints

Isgec Heavy Engineering Limited, which started as a bold venture in 1933 with Saraswati Sugar Mills, is today a global leader in Manufacturing, Projects, and Sugar.

A lot has changed over these past ninety years. Our research and development excellence has made us a critical link in the supply chain of decarbonisation, including green ammonia, green hydrogen, solar panels, emission controls including SOx NOx, ethanol production, steam reduction, incineration and waste to energy boilers, and methanisation, etc. Along with our portfolio, the size of our company has also multiplied—a turnover of 8,000+ crores, 8 plants, and clients across 93 countries.

However, a lot has remained the same over these nine decades, the integrity of our management, our environmentally conscious decision-making, maintaining a safe working environment for our employees, our commitment to give back to the communities around us, and holding the highest regard for our colleagues who have been the building blocks of our success.

Croatia  
Cyprus  
Czech Republic  
Denmark  
France  
Germany  
Hungary  
Italy  
Netherlands  
Poland  
Russia  
Spain  
Sweden  
Turkey  
Ukraine  
United Kingdom  
Uzbekistan

Noida, U.P - Head Office

Manufacturing Plants:

Yamunanagar, Haryana  
Presses & Press Brakes, Process Equipment, Iron Castings, Liquified Gas Containers, Prefabricated Piping Spools, Contract Manufacturing

Rattangarh, Haryana  
Boilers, Pressure Parts, Pocess Skids & Modules, Pre-Assembled Modules, Pre-Assembled Pipe Racks

Bawal, Haryana  
Standard Mechanical Presses and Press Brakes

Muzaffarnagar, Uttar Pradesh  
Steel Castings

Dahej, Gujarat  
Process Equipment, Material Handling Equipment

Sugar Plant & Distillery  
Yamunanagar, Haryana  
Saraswati Sugar Mills (SSM)

Manufacturing Plant in  
Windsor, Canada  
Eagle Press and Equipment

Belize  
Canada  
Costa Rica  
Dominica  
Dominican Republic  
El Salvador  
Guatemala  
Honduras  
Jamaica  
Mexico  
Nicaragua  
Panama  
Sint Maarten  
Trinidad & Tobago  
United States of America

Argentina  
Bolivia  
Brazil  
Chile  
Colombia  
Ecuador  
Guyana  
Paraguay  
Peru  
Uruguay  
Venezuela

Eswatini  
Ethiopia  
Kenya  
Malawi  
Mali  
Mauritius  
Mozambique  
Nigeria  
Senegal  
Sierra Leone  
South Africa  
Sudan  
Tanzania  
Uganda  
Zambia  
Zimbabwe

Algeria  
Bahrain  
Egypt  
Iran  
Iraq  
Jordan  
Kuwait  
Lebanon  
Libya  
Malta  
Morocco  
Oman  
Qatar  
Saudi Arabia  
Syria  
United Arab Emirates  
Yemen

Bangladesh  
India  
Nepal  
Pakistan  
Sri Lanka

Australia  
Brunei  
China  
Fiji  
Indonesia  
Japan  
Malaysia  
Phillipines  
Singapore  
South Korea  
Thailand  
Vietnam

Distillery Plant in  
Cavite, Phillipines  
Cavite Biofuel Producers Inc.

“Customers around the globe have, time & again, entrusted Isgec to be their growth partner.”



## Our Journey

1933

- Isgec, formerly known as Saraswati Sugar Syndicate Limited, was founded.

1946

- Started manufacturing engineering goods.

1965

- Isgec John Thompson Ltd. (IJT) was established for industrial boilers.

1977

- Listed on the Delhi Stock Exchange.

1981

- Isgec acquired a steel castings unit in Muzaffarnagar, Uttar Pradesh.

1985

- Entered into a technology transfer agreement with Rovetta Presse Spa, Italy for manufacturing mechanical presses.

1988

- Isgec John Thompson Ltd. (IJT) signed a technology tie-up with Pyropower of A. Ahlstrom Corporation for Circulating Fluidised Bed Combustion (CBFC) Boilers.

1933-1990

1991-2010

1998

- Licensing agreement for Circulating Fluidised Bed Combustion (CFBC) Boilers up to 60MW with Amec Foster Wheeler North America Corporation.
- Licensing agreement with Belleli, Italy to manufacture High Pressure Reactors for Oil Refineries and other Petrochemical Plants.

2007

- Group turnover crossed INR 1,000 crores (USD 119 million).

2008

- Listed on the Bombay Stock Exchange.
- Dahej plant in Gujarat set up for large Process Equipment.

2009

- Bawal Plant was founded to manufacture Standard Presses.
- Group turnover crossed INR 2,000 crore (USD 239 million).

2012

- Joint venture with Hitachi Zosen, Japan, to manufacture critical process equipment.
- Group turnover crossed 3,000 crore (USD 358 million).

2015

- Joint venture with Sumitomo SHI FW Energia, Finland (formerly known as Foster Wheeler) for Boilers.
- Joint venture with Titan Metal Fabricators, USA for manufacturing process equipment using reactive metals and high nickel alloys.

2017

- Joint venture with Redecam, Italy for providing SOx and particulate matter emission control solutions.

2011-2015

2016-2024

2018

- Acquired 100% stake in Eagle Press & Equipment Co. Ltd., Canada.
- Established Material Handling Workshop in Dahej, Gujarat.

2020

- Group turnover crossed INR 5,000 crore (USD 598 million).

2021

- Listed on the National Stock Exchange.
- Commissioned 100 KLPD Ethanol Plant in Saraswati Sugar Mills (subsidiary), Yamunanagar.

2023

- Market capitalisation crossed INR 6,000 crore (USD 717 million).

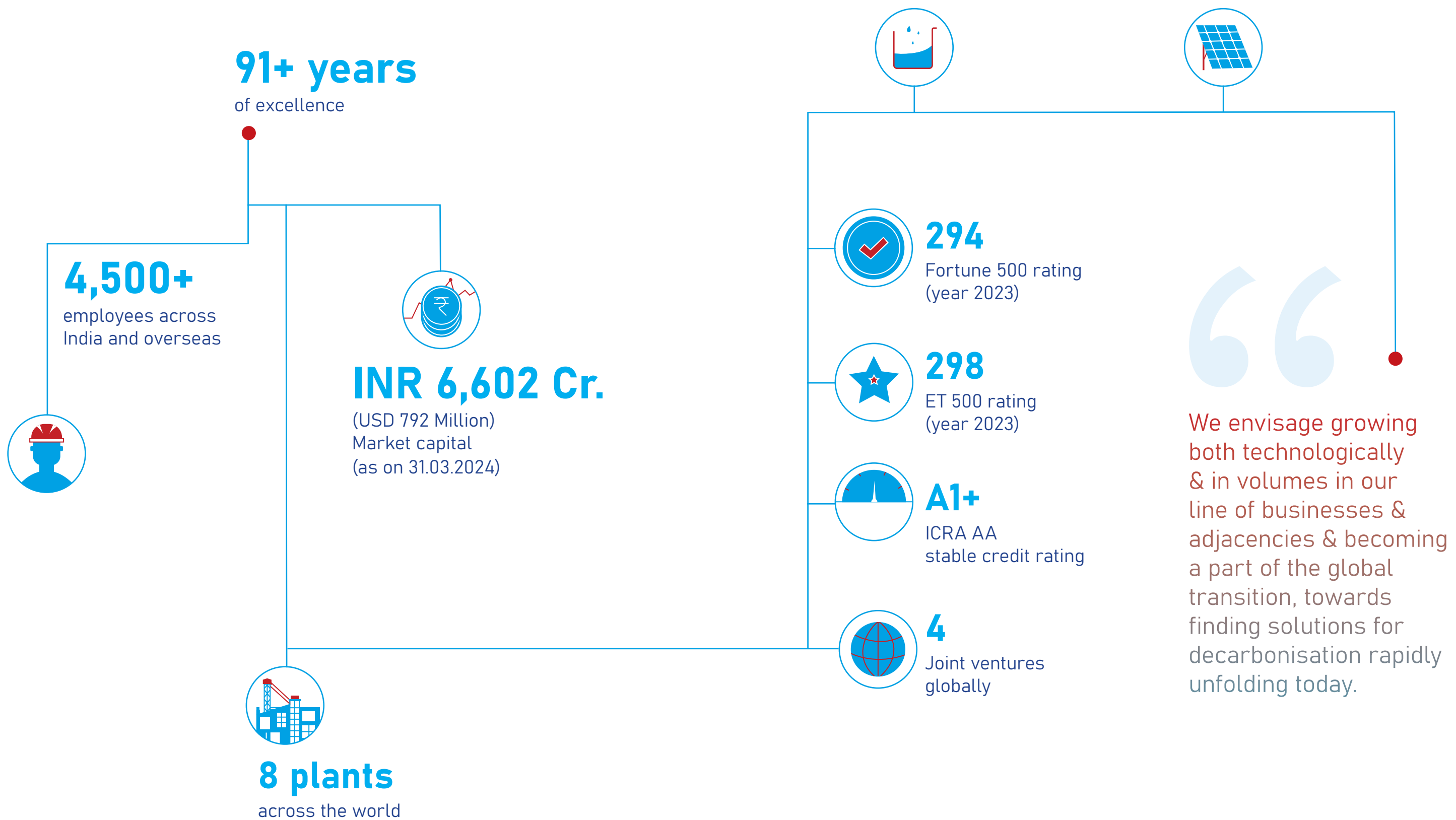
2024

- Commercial production began at Isgec's 130 KLPD distillery, Cavite Biofuel Producers Inc. in the Philippines.



● Our Impact

Evolving, Expanding, & Engineering the Future







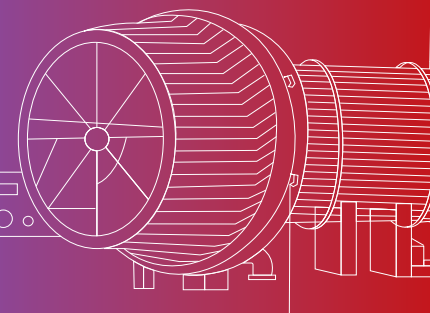
Isgec recognises that the credit for its success in the past & the company's future lies in the hands of its workers & employees.



## Our Business Verticals

- Manufacturing
- Projects
- Saraswati Sugar Mills (SSM)

01



## Manufacturing

*Isgec's manufacturing is a chapter in Make in India's success story. For the past seventy-eight years, Isgec has manufactured world-class equipment at competitive costs and delivery times. Our six state-of-the-art manufacturing facilities, spanning over 2,00,000 sqm of covered production area, are strategically located in Yamunanagar, Rattangarh, Muzzafarnagar, Dahej, Bawal, and Windsor (Canada).*

02



## Projects

*Isgec is among India's top total solution providers for project execution, taking single-point responsibility from concept to commissioning. We bolster our exceptional engineering team with data-centric procurement processes and rigorous on-site monitoring, ensuring the delivery of high-quality, cost-effective solutions to our clients. Our offerings include integrated IIoT platforms, AI modules, operation and maintenance services, retrofits, and spares.*

03



## SSM

*Established in 1933, Saraswati Sugar Mill (SSM) is a leading player in the Indian Sugar Industry, with a 10,000 TCD crushing capacity and a 160 KLPD distillery. We are renowned for our consistent product quality and commitment to sustainable operations and workplace safety.*

01

## Manufacturing

Pg. 16

Presses &amp; Press Brakes

Pg. 18

Process Equipment

Pg. 22

Castings

• Steel

• Iron

Pg. 24

Liquified Gas Containers

Pg. 25

Boiler &amp; Pressure Parts

Pg. 26

Prefabricated Piping Spools

Pg. 27

Process Skids &amp; Modules

Pg. 28

Contract Manufacturing





## Presses

Isgec is India's leading supplier of mechanical, servo and hydraulic presses, delivering credible solutions for various industries. With over 55 years of experience, we've pioneered high-quality, innovative press solutions ranging from 63 MT to 15,000 MT worldwide.

Committed to excellence, we strictly adhere to JIS and DIN Standards for Press Accuracy, guaranteeing that our products meet the highest industry benchmarks. Our solutions also comply with International Safety Standards such as CE, OSHA, and country-specific requirements, ensuring the safety and reliability of our products.

Additionally, Isgec integrates advanced technologies like ISGEC ACTS (Automated Component Transfer System), a 2-axis & 3-axis Electronic Servo Transfer System, offering comprehensive turnkey solutions. We also offer Industry 4.0 advancements with Isgec REACH (REMOTE ENABLED ACCESS & CLOUD HUB), optimising manufacturing processes through smart technologies.



Eagle Press & Equipment Co Ltd. based in Windsor, Canada, is a subsidiary of Isgec Group that engineers and manufactures Mechanical, Hydraulic and Servo Presses catering to the North American Market.



MATR Series Transfer Mechanical Presses



630T Dual Drive Servo Mechanical Press

### Key products

- Presses (Servo, Mechanical & Hydraulic)
- Tandem Press Lines
- Transfer Presses
- Servo Presses
- Progressive Die Presses
- Blanking Mechanical Presses
- Hot/Cold Forging Presses
- Tryout & Die Spotting Hydraulic Presses
- Hot Stamping & Hot Forming Presses
- Deep Draw Hydraulic Presses
- High-Speed Hydraulic Presses
- Special Application Presses

### Industries we cater to

- Automotive for OEMs
- Automotive for Tier-1 & Tier-2
- White Goods
- Brown Goods
- Powder Compaction
- Railways
- Defense
- Aerospace
- Shipyard
- Construction
- Refractory



We have supplied 5,500+ Presses, including 100+ Transfer Presses & 90+ Tandem Press Lines across 26 countries.

## Standard Mechanical Presses & Press Brakes

### Key products

- Gap Frame Presses – GZ Series (40MT-400MT)
- Gap Frame Link Motion Presses – GL Series (110MT-315MT)
- Gap Frame Double Point Presses – G2 Series (110MT-315MT)
- Ring Frame Presses – GR Series (110MT-315MT)
- H-Frame Single Point Presses – Max1 Series (200MT-500MT)
- H-Frame Double Point Presses – Max2 Series (200MT-630MT)
- CNC Hydraulic Press Brakes – HPB Series (40MT-800MT)

### Industries we cater to

- Automotive
- White Goods
- Railways, Defense, Aerospace
- Agriculture Equipment
- Medical Equipment
- Furniture, Industrial Doors
- Telecommunication
- Earthmoving/Construction Equipment
- Elevator Industry
- Heat Ventilation and Air Conditioning
- Electrical Panel Industry
- Petrochemical



### Did you know?

We have supplied 2,500+ high-quality precision power presses and hydraulic press brakes worldwide for Major OEMs, MNCs, & their Tier-1 & Tier-2 manufacturers in the sheet metal forming & bending industry.

Isgec Bawal is a leading manufacturer and supplier of Standard Gap and Monolithic Frame mechanical power presses ranging from 40 MT to 630 MT and CNC hydraulic press brakes ranging from 40 MT to 800 MT, catering to the sheet metal forming and bending industry globally.

Our mechanical power presses and CNC hydraulic press brakes are designed with the highest level of rigidity, precision, and reliability. We ensure they meet international accuracy and safety standards and are accredited by both CE and OSHA.



Hydraulic Press Brake - 340T X 6200mm



Battery of Gap Frame One-point and Two-point Presses



Robotic Automation for Standard Mechanical Press



## Process Equipment

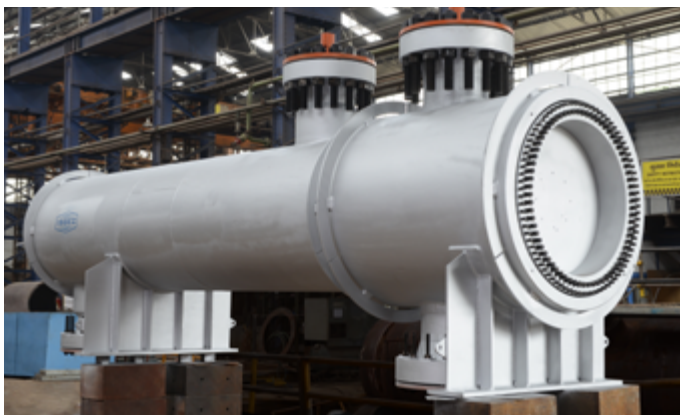
Isgec's Process Equipment Division in Yamunanagar excels in designing, engineering, manufacturing, testing, and supplying critical process equipment.

We collaborate with world-renowned licensors to offer a comprehensive range of products, including screw plug heat exchangers and process gas waste heat boilers licensed by TEI, high-pressure/low-pressure feedwater heaters and surface condensers with Foster Wheeler USA, and helix heat exchangers with the technical backing of Lummus.

We supply our exchangers in a range of metallurgies—Nickel alloys (Monel, Inconel), Stainless steel (including duplex and super duplex), low alloy steels, and carbon steel and are capable of manufacturing equipment for polysilicon and other new energy projects in 800 H.



Heat Exchanger with Internal Bore Welding (Licensor's Proprietary Equipment)



Breech Lock

### Key products

- Shell & Tube Heat Exchanger (Including Screw Plug Type, Helical Type and HP Feed Water Heaters)
- Reactor and Thick Separator
- Process Gas Waste Heat Boiler
- High Pressure Boiler Steam Drum
- Site Fabricated Equipment

### Industries we cater to

- Green Hydrogen
- Polysilicon
- Oil & Gas Processing
- Refinery & Petrochemical
- Fertiliser
- LNG Liquefaction & Regasification
- Green Ammonia
- Thermal Power
- Nuclear Power
- Chemicals



### Did you know?

Isgec has supplied Exchangers with Inner Bore Welding (IBW) of tube-to-tube sheet joints on the backside of tube sheets.

### Key products

- Hydro-processing Reactors
- Ammonia Converter & Internals
- HP Urea Equipment (Urea Reactor, Stripper, Carbamate Condenser, Urea Hydrolyzer)
- Waste Heat Boilers & Superheaters
- Tubular Reactors
- Secondary Reformer
- Separators
- Coke Drum
- Reactors for Petrochemicals Plants (PVC, VCM, PTA, GTL, Methanol)
- Distillation Columns
- Large Shell & Tube Heat Exchangers

### Industries we cater to

- Oil & Gas Processing
- Refinery & Petrochemical
- Fertiliser
- LNG Liquefaction & Regasification
- Green Ammonia
- Thermal Power
- Steel
- Chemicals



### Did you know?

IHZL has supplied a Reactor weighing 1150 MT, which was 220 mm + 7 mm Weld Overlay in Vanadium Modified Chrome Moly Steels with SS 347 Cladding and supplied columns with lengths up to 91 m and diameters up to 13.1 meters.

## Isgec Hitachi Zosen Limited

The joint venture between Isgec and Hitachi Zosen Corporation, Japan, has a state-of-the-art plant at Dahej, complete with an RO-RO Jetty to ship out over dimensional cargo (ODC) equipment.

We have secured approvals from major Process Licensors—Axens, BP, Casale, CLG, EIL, Exxon Mobil, Foster Wheeler, KBR, TKIS, Topsoe, Total, Toyo, and UOP—to manufacture proprietary equipment.

Equipped with cutting-edge manufacturing capabilities and the capacity to handle complex metallurgies—with thicknesses up to 12 inches, diameters up to 14 meters, and weights up to 2400 MT—we are the global leaders for the supply of critical equipment in the Oil and gas, Refinery, Petrochemical, Ammonia, Urea, and Polysilicon industries.



Vanadium Alloy Steel Reactor for Hydroprocessing Unit



Urea Reactor



## ● Isgec Titan Metal Fabricators Pvt. Ltd.

*Isgec Titan Metal Fabricators Pvt. Ltd. is a joint venture between Isgec Heavy Engineering Ltd., India and Titan Metal Fabricators, USA. Our expertise lies in custom fabricated corrosion-resistant process equipment in exotic metallurgies—Titanium, Tantalum, Niobium, Zirconium, Hastelloy, Inconel, Monel, Pure Nickel, and other High Nickel Alloys—that cater to the global demands of chemical, petrochemical, and pharmaceutical companies. We are approved by globally renowned process licensors, including Ineos, KBR and KES, underscoring our commitment to quality and excellence.*



Zirconium Heat Exchangers for Chemical Industry



Titanium Exchangers for PTA Plant



Niobium Heat Exchanger for an Agrochemical Plant

### Key products

- Heat Exchangers
  - Shell & Tube
  - Bayonet
- Pressure Vessels
- Reactor/Reactor Internals
- Columns/Towers
- Piping
- Custom Fabrication

### Industries we cater to

- Chemicals
  - Fluro-Chemical/Agro-Chemicals/ Fine-Chemicals
  - Nitric Acid/Sulphuric Acid/ Hydrochloric Acid
- Fertilisers
- Refineries
- Acid Concentration/Spent Acid Plants
- Bromine Plants
- Steel Plants
- Pharmaceuticals
- Power



We have a Class 1,00,000 clean room facility spanning 1,000 sq m. to manufacture critical equipment in a dust-free environment.





## Castings (Steel)

For the past four decades, Isgec has been the leader in steel casting technologies, exporting nearly half our turnover to markets in the USA, Europe, Canada, and Japan.

We are unwavering in our commitment to supplying top-quality complex casting solutions for critical applications across various metallurgies, including duplex, super duplex, and low-alloy steel, including grade P91, creep steel, stainless steel, and carbon steel. Our comprehensive solutions are backed by rigorous research and development and a skilled workforce, setting new standards globally.



Pelton Runner-Hydro Turbine Castings



Barrel (High Pressure Outer) Casing



Main Frame

### Key products

- Steam/Gas Turbine Casings including Single piece barrel type
- Hydro-Crown, Band, Blades, Runners (Pelton & Francis) & Guide Vanes
- Pump Castings including Multi Volute Pump Casing
- Crusher Main Frame, Mill Heads Casting
- Kiln Tyres, Grinding Table, Girth Gear
- Mill Housing, Chocks, Coiler Drum (HRS) castings
- Compressor casing castings
- General Engineering castings

### Industries we cater to

- Hydro/Steam/Gas Power
- Cement & Mining
- Steel Plants including Steel Rolling Mills
- Pumps & Valve Industries (Petroleum & Water Stream)
- Pulp & Paper



We are one of the only plants in India that has accomplished a single-piece steel casting weighing 70 metric tons.

### Key products

- Column & Tower Casting for Soda Ash Plants
- Checker Support Assembly & Choke for Steel Sector
- Stamping Dies for Automotive Sector
- Base, Column & Slide for Machine Tool Sector
- Roller bearing housings & other castings for Cement Sector
- Press roll shell & End Journals for Paper Sector
- Horizontal/ Vertical Pumps & Valves
- Frame & Cylinder Castings for Pump/ Compressor Sector
- Body, Guide Vane & Bearing housing for Centrifugal Compressors
- Ni-Hard, Ni-Resist & Hi-Chrome Castings for Power Sector
- Fusion Pot, Pan Body, Top Covers & Agitator Castings for Dye & Dye Stuff Sector
- Crown Pinions
- Headstocks for cane crushing mills up-to 55" x 110"

### Industries we cater to

- Soda Ash
- Steel Plant
- Machine Tools
- Tool & Dies
- Cement
- Pump & Compressor
- Power
- Paper
- Chemical & Dye Stuff



Isgec is India's largest manufacturer of Soda Ash & Full Mould castings.

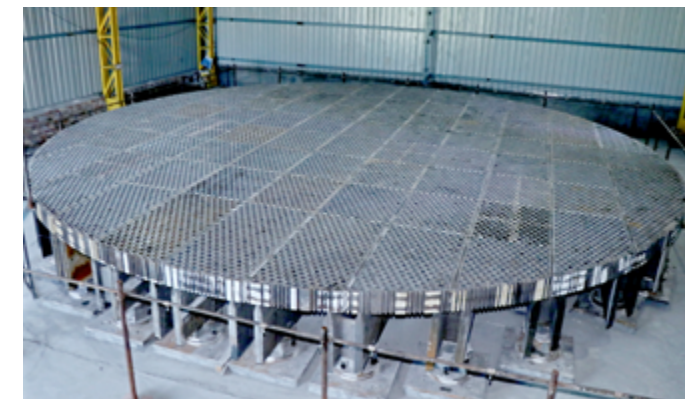
## Castings (Iron)

Isgec is the premier manufacturer of high-quality Grey, Ductile, and alloy iron castings, with a modern pattern shop and in-house machining facilities. Our expertise lies in melt metallurgy, precise pattern design, efficient processes, and consistent manufacturing protocols, with a steadfast dedication to quality.

We supply castings weighing up to an impressive 25T in Grey and Alloy Iron and 15T in Ductile Iron. Our superior cast iron products are tailored to meet diverse specifications, ensuring customer satisfaction and excellence in all our projects.



Soda Ash Casting



Checker Support Assembly



Headstocks



## Liquefied Gas Containers

Since 1964, Isgec has been a pioneer in packaging solutions for the transport of liquefiable gases, including Chlorine, Sulphur dioxide, Ammonia, various types of refrigerant, and chemical gases. Safety is a priority. Our tonner prototypes are checked using design tools like Finite Element Analysis (FEA) and rigorous testing—strain gauging and 6 m height drop tests—to simulate any potential stresses and leakages.

Isgec is the only company in the world that manufactures all seven tonner models, enabling us to meet country-specific regulations and serve clients across the globe.



Ammonia Gas Ton Containers



Ton Container Manufacturing Shop



Ethyl Chloride Gas Ton Container

### Industries we cater to

- Chlor Alkali (Caustic Soda & Chlorine producers)
- Paper & pulp
- Water treatment
- Various refrigerant gases
- Ammonia
- Chemical gases such as
  - Sulfur dioxide
  - Difluoromethane
  - Dimethylamine
  - Ethylene Chloride
  - Ethyl Chloride
  - Ethylene Oxide
  - Freon
  - Methyl Chloride
  - Monomethylamine



We have successfully supplied over 4,00,000 gas tonners, solidifying our position as the world's largest manufacturer of liquefied gas containers.

### Key products

- Boilers & Pressure parts
- Modular assemblies for boiler parts like Economiser, Super heater, Convection cage, Water walls, Air Pre-heaters
- Heat Recovery Steam Generation(HRSG)
- Incolonel Overlay Parts
- Steam Drums
- Special products-Cooling Stacks, Convention Modules

### Industries we cater to

- Refineries
- Waste to Energy
- Biomass
- Sugar Paper & Pulp
- Distillery
- Power
- Mining & Steel
- Chemicals



Internationally, we stand out as one of the select fabricators that provide Inconel 625 and Inconel 825, a weld overlay solution for water wall panels through the application of Cold Metal Transfer Technology.

## Boiler & Pressure Parts

Isgec's boiler and pressure parts manufacturing is globally renowned for its production quality. Our cutting-edge semi-automatic shops feature advanced equipment, including Automatic Straight Tube Welding, Real-time Radiography, a Dual Radius and dual Direction system bender, an 8-head SAW Panel welding machine, and a precision Panel bending machine.



Waste Heat Boiler Assembly



Multi-layered Superheater Coils



Cooling Stack Assembly



## Prefabricated Piping Spools

We deliver precision-engineered prefabricated pipe spools driven by our expertise and state-of-the-art manufacturing facilities.

Our specialised pipe spooling shops have a total installed capacity of 6,00,000 inches diameter per year and can deliver pipe spools in line with IBR, ASME, and EN standards.



Pipe Spool



Clad Pipe Spool



Ring Header

### Key products

- Pre-Fabricated Piping Spools
- Induction Bends
- Ring Headers up-to 6.5 m (dia) for sizes up-to 24" x 60 mm thick

### Industries we cater to

- Refineries
- Waste to Energy
- Biomass
- Petrochemical
- Oil & Gas
- Fertiliser
- Paper & Pulp
- Nuclear
- Distillery
- Power
- Mining & Steel
- Chemicals



### Did you know?

We are a one-stop solution for customers' prefabricated spooling needs, including value-added services like spool engineering. We have catered to various Materials of Construction, including critical ones like P91, SS, Duplex, & Inconel.

### Key products

- Modular Process Skids:
  - Pre-Assembled Units (PAU)
  - Pre-Assembled Racks (PAR)
- Valve Skids

### Industries we cater to

- Refineries
- Desalination
- Renewables
  - Waste to Energy
  - SAF
  - Ethanol
  - Plastic Recycling
  - Hydrogen
- Power
- Oil & Gas
- Petrochemical
- Fertiliser



### Did you know?

We can integrate large dimension process skids & modules at our coastal facility and ship them to different parts of the world through our RoRo jetty.

## Process Skids & Modules

Isgec's modular skids leverage its extensive engineering expertise to deliver complete solutions, encompassing detailed engineering, procurement, fabrication, and shop assembly.

Our top-of-the-line skids and modules, tailored for the process industry, guarantee shorter project cycles, improved safety, and minimised site work, ultimately boosting our clients' bottom lines.



Pressure Swing Absorber (PSA) Unit Skid



Common Gas Skid



Valve Skid



## Contract Manufacturing

We use our expertise and experience in fabrication, machining, assembly, and engineering to manufacture built-to-print and built-to-specification equipment for a wide range of sectors.

Our team of thirty highly skilled engineers is supported by state-of-the-art facilities, including a Battery of 16 Horizontal Boring Machines, a 7-axis CNC Plano-miller, a 200 MT single-piece lifting capacity, and a crane hook with a 21 M assembly height.



Caster Segment for Steel Sector



Drive and Tipping Station



Power Head Assembly for Mining

### Key products

- LD Converter
- Hot Metal Ladle Transfer Car
- Slab Caster Segments
- Drive & Tipping Station
- Tundish
- Mounting Body for Towed Gun
- HighWall Mining parts
- Main Inlet Hydro Valve
- Stator Frame
- Hybrid Casings

### Industries we cater to

- Steel
- Defence
- Mining
- Power
- Medical Equipment
- Cement
- Space
- Nuclear
- Railways
- Sugar



### Did you know?

We are one of the first Indian companies to manufacture LD converters, hitherto imported, for steel plants, contributing to the Make in India initiative.

02

## Projects

Pg. 30

Boilers

Pg. 31

Power Plants

Pg. 32

Sugar Plants

Pg. 33

Distillery

Pg. 34

Emission Control Solutions

Pg. 35

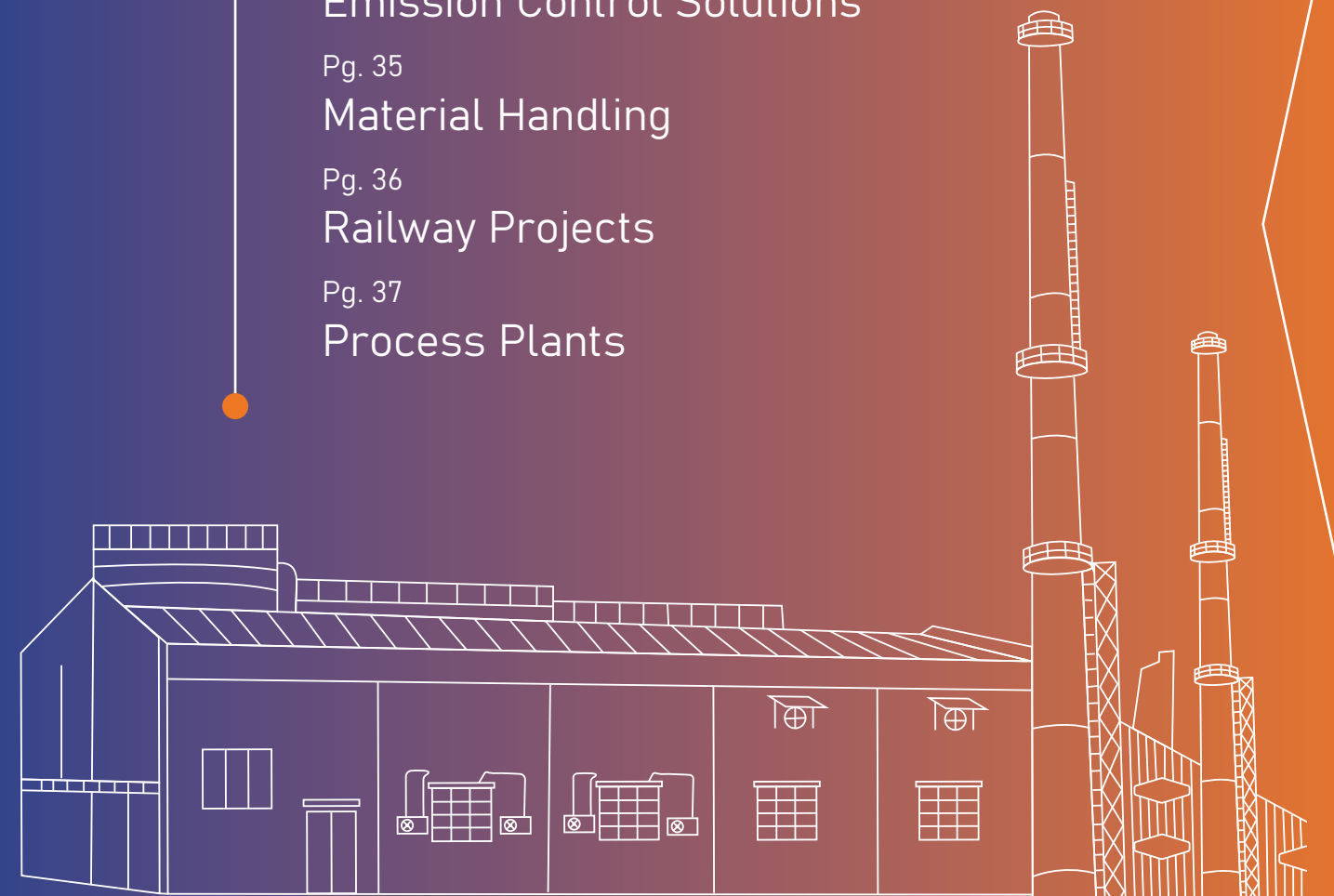
Material Handling

Pg. 36

Railway Projects

Pg. 37

Process Plants





## Boilers

Isgec is a leading company in the boiler market, having installed over 950+ high-pressure and high-capacity boilers. With all our boiler pressure parts manufactured in-house, we offer our clients world-class quality at competitive pricing.

Through our extensive research and development, we have also accrued multiple patents, including feed and tube leakage detection systems, giving our clients exclusive access to technologies that boost operational efficiency.

Isgec is currently the most prominent global supplier of biomass-fired boilers, with 400+ biomass boilers installed across 50 countries, reaffirming our commitment to green energy.



Isgec is India's largest supplier of both environment-friendly Circulating Fluidised Bed Combustion Boilers (CFBC) & High Pressure (125 Kg/cm<sup>2</sup>) Grate Boilers for the Sugar Industry.



Circulating Fluidised Bed Combustion Boilers (CFBC)



Heat Recovery Steam Generators (HSRG) Boiler

### Key products

- Biomass Fired Boilers
  - Traveling Grate Boilers
  - Reciprocating Grate Boilers
  - Water cooled Vibrating grate (In partnership with BWE, Denmark)
  - Pin Hole Grate Boilers
- Vinasse/ Spent wash /Slop Fired Incineration Boilers
- Circulating Fluidized Bed Combustion Boilers (CFBC) - (Under License - Sumitomo SHI FW)
- Oil & Gas Fired Boilers
  - Field Erected Type
  - Shop Assembled Type (Under license - Wood PLC)
- Waste Heat Recovery Boilers for
  - Cement Kiln
  - Coke Oven
  - Sponge Iron
  - Refinery Process Exhaust
  - RH furnace
  - Calcination
- Heat Recovery Steam Generators (HRSG) (Under license - NEM)
- Atmospheric/Bubbling Fluidized Bed Combustion (AFBC)
- Blast Furnace Gas (BFG) Fired Boilers
- Tail Gas Fired Boilers
- Waste to Energy (MSW/RDF/Straw) fired Boilers
- Flue Gas Coolers
- PC fired Boilers
- Operation & Maintenance
  - Retrofit & modernisation
  - RLA Study
  - Spares



### Did you know?

Isgec's world-class 'Biomass Fired Vibrating Grate Boiler', in partnership with BWE, Denmark, uses rice straw as fuel. Thus, every 75 Tph Biomass Fired Vibrating Grate Boiler we supply annually reduces 75,000 tons of CO<sub>2</sub> emissions by preventing stubble burning.

### In-house solutions

- Boilers
- Pollution Control Equipment
- Fuel Handling System
- Electrical
- Control & Instrumentation
- Water Solutions

### Industries we cater to

- Cement
- Steel & Mining
- Sugar
- Distillery
- Chemical
- Sponge Iron
- Paper
- Textile
- Power
- Metal
- Pharma



We have supplied 80+ power plants on an EPC basis with a cumulative capacity of over 1600 MW.

## Power Plants

Isgec is a premier power plant solution provider for Independent Power Plants (IPPs), Captive Power Plants, and Co-generation applications. Isgec's expertise as an OEM for critical equipment—boilers, pollution control, and fuel handling—supplemented by in-house design, manufacturing and robust industrial control systems guarantees our clients reliable power with minimal lifecycle costs. We take single-point responsibility for our projects, from concept to commissioning, making Isgec the top choice for supplying power plants.



Captive Power Plant



Waste Heat Recovery Boilers (WHRB)



Power Plant-Grasim



## Sugar Plants

Isgec is a global leader in sugar plant machinery, providing comprehensive solutions for cane and beet sugar plants ranging from 500 to 2,4000 TCD.

We excel in turnkey projects, modernisation, expansion, and efficiency improvement. Our innovative solutions—featuring low steam and power consumption and easy maintenance—include 13 patented designs, like falling film evaporator distributor, tubeless calandria, and a roll sugarcane crushing mill scrapper.

Moreover, we offer a range of automation solutions, including models with built-in artificial intelligence, allowing customers to optimise their plant operation and equipment efficiency with minimum workforce.



**Isgec's designed plant has achieved India's lowest steam consumption—26% on cane for the production of bold grain white sugar.**



5,000 TCD Sugar Plant – A/B/C Boiling Vertical Continuous Pan (VCP), Design on 29% Steam Consumption



2,500 TPD Standalone Port-Based Sugar Refinery including 12 MW Power Plant with Steam Consumption 0.65 KG/KG R.S.O

### Key products

- Artificial intelligence (AI) systems in Mills, FFE, batch pans, vertical continuous pans (VCP)
- Sugar Refinery (Backend & Standalone)
- Process plant for beet sugar plants
- Application of Multi Vapour Recompression (MVR) technology to reduce steam consumption
- Economic feasibility study of plant for energy, water & wastewater optimisation
- Spares & Retrofitting
- Operation and Maintenance of Sugar, Co-generation

### Industries we cater to

- Sugarcane plant
- Sugar beet plant
- Sugar refineries back end & port based standalone refineries.



### Did you know?

Isgec is the world's largest sugar plant supplier. We have installed over 220 complete sugar plants, including major project expansions, 900 cane-crushing mills, and machinery in all 51 major cane-growing countries.

### Key products

- Complete Distillery Plant
- 1 G Ethanol/ENA plants
- Ethyl acetate plant
- Pharmaceutical ethanol & ENA plant
- Any plant from alcohol derivatives
- Advanced Bio Fuel 2G
- Compressed Bio Gas (Bio CNG) from Press mud cake (PMC), Bagasse, paddy straw, Spent wash, any bio mass etc.

### Feedstocks we handle

- C Heavy Molasses
- B Heavy Molasses
- Sugar Syrup/Sugar Juice
- Raw sugar to Ethanol
- Broken rice
- Damaged food grain from FCI
- Maize
- Tapioca



### Did you know?

Isgec is one of the only Indian companies which has executed a single unit 500 KLPD Multi-feed Distillery Plant for production of Ethanol & ENA on Syrup, Molasses & Grain.

## Distillery

Isgec specialises in supplying turnkey distilleries, with zero liquid discharge for the production of Ethanol and Extra Neutral Alcohol.

Our energy efficient plants are designed to guarantee specific steam consumptions for different feed stocks: syrup—2.2 kg/ltr, B heavy—2.5 kg/ltr, C molasses—3.0 kg/ltr, and Grain—3.2 kg/ltr. Clients also have the opportunity to further reduce their steam consumption by opting for Isgec's cutting edge multi vapour recompression (MVR) technology.

Isgec's bioethanol plants are tailored to cater to a wide range of feedstock, including all sugary feedstock such as syrup, B molasses, and C molasses, and starchy feedstock like rice, maize, corn, cassava, and Napier grass.

We also supply highly efficient Compressed Biogas (CBG) Plants for all feedstocks, such as Press Mud Cake (PMC), Spent Wash, Paddy Straw, etc., yielding a high gas output with minimum discharge.



160 KLPD Distillery Plant



160 KLPD Multi-feed Distillery with 48 TPH Slop fired Incineration Boiler and 5.6 MW Power Plant



## Emission Control Solutions

We deliver concept to commissioning emission control solutions that effectively reduce air pollution by minimising harmful particulate and gaseous emissions. Our solutions help industries in meeting region-specific regulatory compliances and in making their operations more sustainable.

Additionally, we offer turnkey emission control solutions through our Joint Venture Company, Isgec Redecam Enviro Solutions Pvt. Ltd., tailored to capture specific pollutants in various industrial applications.



**Isgec is the only company in India that has commissioned a Wet FGD System for an 800 MW Unit.**



Flue Gas Desulphurisation (FGD)



Bag Filters

### Key products

- Flue Gas Desulphurisation (FGD) Systems
  - Wet Flue Gas Desulphurisation (WFGD)
  - Semi Dry Flue Gas Desulphurisation (SDFGD)
  - Dry Sorbent Injection (DSI)
  - Tail Gas Desulphurisation (TGD)
- NOx Emission Reduction Systems
  - Selective Non-Catalytic Reduction (SNCR)
  - Combustion Modifications
- Particulate Matter Control Systems
  - Electrostatic Precipitators (ESP's) including Hot & Wet ESPs
  - Bag Filters
  - Hybrid Filters
  - R&M
  - Retrofit of Utility Plant ESP's meeting latest emission norms
  - Flue Gas Conditioning for ESP Performance Improvement

### Industries we cater to

- Power
- Steel
- Non-Ferrous (Aluminium, Zinc, Copper etc.)
- Cement
- Minerals and Mining
- Sugar & Distilleries
- Carbon Black
- Paper & Pulp



### Did you know?

Isgec is India's only EPC company which provides the full range of SOx control technology solutions.

### Key products

- Trough/Belt Conveying Systems
- Pipe Conveyor System
- Port/ Cargo Container Cranes
- Ship Unloader/Loader
- Stacker Reclaimer

### Industries we cater to

- Industrial plants (metallurgical plants)
- Ports
- Mines
- Stockyards
- Power stations
- Cement works
- Sugar Plants
- Co-generation Power Plants



**We are the only Indian company that has manufactured an electrically operated Rubber Tyre Container Gantry Crane with a 41 T capacity & a Ship Unloader with a capacity of 2750 TPH & a height of 60 meters.**

## Material Handling

Isgec supplies a range of material handling solutions, from individual machines to complete facilities for industrial plants, ports, mines, and stockyards.

Partnering with global technology providers, we deliver cutting-edge conveyor systems for the eco-friendly transport of bulk materials like coal, gypsum, limestone, etc.

Our in-house manufacturing facilities in Dahej, Gujarat, enable us to deliver the best-quality cost effective sustainable solutions to our customers.



Coal Handling System



Ship Unloaders - Port Handling Equipment



Stacker cum Bucket Wheel Reclaimers - Stockyard Equipment



## Railway Projects

Isgec's railway division excels in specialised projects, including constructing railway coach factories, workshops, and metro depots. We handle everything from plant machinery and mechanical works to electrification and track linking, ensuring comprehensive railway and metro infrastructure solutions.



We have built some of the largest rail coach factories for Indian Railways in Latur (Maharashtra) & Sonipat (Haryana).



Rail Coach Factory

## Process Plants

Isgec offers turnkey solutions to the process industry as an extension of our high-quality process plant equipment manufacturing. We are geared to handle complex and specialized hydrocarbon projects, covering design, mechanical, electrical, and instrumentation engineering and construction. Isgec's strategic tie-ups with reputed process licensors and technology partners and our approvals from major engineering consultants have enabled us to emerge as a significant player in this segment.



Process Plant

### Project scope

- Railway Coach Factories/ Workshops/Sheds
- Metro Depot Construction
- Overhead Electrification Works (OHE)



### Did you know?

Isgec executed a turnkey Axle Forging Plant for the Rail Wheel Factory in Bangalore with a capacity of 1,08,000 axles per annum.

### Project scope

- Complete Sulphuric Acid Plants
- Off-site Utilities for Process Plants
- Flare System for Refineries
- Bio Methanisation Plants
- Balance of Plant for Process Plants

03

# Saraswati Sugar Mills

Pg. 38

Refined Sugar

Pg. 39

Ethanol





## Ethanol

```
graph LR; SF[Sugar Factory] -- Molasses --> F[Fermentation]; F -- CO2 --> UDC[Used for Dry Ice & Fizzy Drinks]; F --> DMSDH[Distillation MSDH]; DMSDH -- Spent Wash --> MEE[MEE Plant]; MEE -- Process --> WT[Water Treatment]; MEE -- Condensate --> WT; MEE -- Slop --> B[Boiler]; B --> A[Ash]; A --> UPMF[Used for making Potash based fertiliser]; B -- Bagasse --> WT; WT --> B; WT --> DMC[Dispatch to OMCs]; DMC --> BP[Blended in Petrol]; BP --> WR[Water Recycling]; WR --> F; WR --> B;
```

The flowchart illustrates the ethanol production process, starting from a Sugar Factory which produces Molasses. This molasses is sent to Fermentation, which releases CO<sub>2</sub> (used for Dry Ice & Fizzy Drinks) and then proceeds to Distillation MSDH. The Distillation MSDH produces Spent Wash, which goes to the MEE Plant. The MEE Plant produces Process Condensate (sent to Water Treatment) and Slop (sent to the Boiler). The Boiler also receives Bagasse and produces Ash (used for making Potash based fertiliser). The Water Treatment unit receives condensate from the MEE Plant and water from the Dispatch to OMCs stage, and it sends water back to the Boiler and the Fermentation stage via Water Recycling. The final product is Blended in Petrol.



## ● We place utmost value on the Environment

“

The importance of safety is engrained in Isgec workforce- safety at factories, safety in offices, safety at sites, & safety in what we deliver.

### Our role in protecting the environment

At Isgec (EHS Certified ISO-14001), we are committed to environmental sustainability. We have a three-pronged approach to achieving our goal.

First, we minimise our use of natural resources- we are constructing our new corporate office to meet the environmental gold standard.

Second, we actively search for more sustainable avenues to fulfil our existing resource requirements. This includes a transition towards renewable fuels, installation of solar panels, and rainwater harvesting systems within our premises.

Third, we ensure that all industrial discharge and emissions are treated with state-of-the-art technology. To this end, we have installed bag filters, wet scrubbers, and in-house water treatment plants.

### And the steps we take

- Solar rooftop installations at all plants.
- Bio-genic CO<sub>2</sub> capture and storage/shipment.
- Recycling of water in hydro-testing and cooling towers.
- Removal of water-cooled air compressors.
- Reduction of water usage in cooling towers with zero cut feeder from UHBVN.
- Use of bagasse and slop as boiler feedstock in sugar factories and distilleries.

### The impact we create

Capturing and storing 45+ tons of biogenic CO<sub>2</sub> during distillery operation.

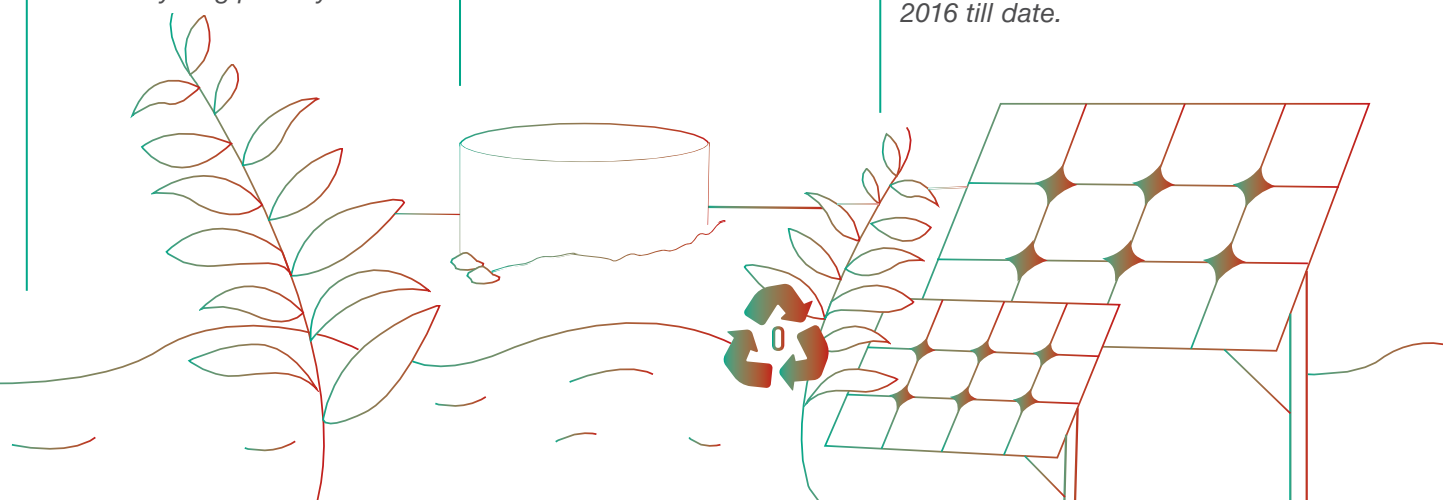
Zero liquid discharge in distillery and over 1,800 KL of water recycling per day.

10 rainwater harvesting systems installed in Isgec plants.

Groundwater extraction reduced by 25% since 2009.

10 solar power systems installed in Isgec plants.

Solar panel installation capacity of 30,48,000 units of electricity equivalent to neutralising the usage of 2042.16 tons of coal from 2016 till date.



## ● We place utmost value on Social Responsibility

### Cultivating a culture of excellence

At Isgec, we have built a diverse and inclusive workforce. Employees work in a stimulating environment to formulate technology-driven sustainable solutions for the challenging industrial problems unfolding around them.

Isgec's centres of excellence are designed to equip the next generation of leaders with skills to accelerate their career growth. We offer a comprehensive job rotation programme, giving employees hands-on exposure to different facets of business problem-solving, supplemented by training modules tailored for functional teams that encompass strategic decision-making, operational excellence, sustainable growth, AI, ML integration, and more.

## Safety

We follow the most stringent safety standards in our manufacturing units and extend safety training across the supply chain to our vendors and contractors.

## Work Environment

We foster a safe, supportive, and engaging work environment championing diversity, inclusivity, equality, and respect.

## Diversity

Actively promoting diversity within our workforce.

## Operational Transparency

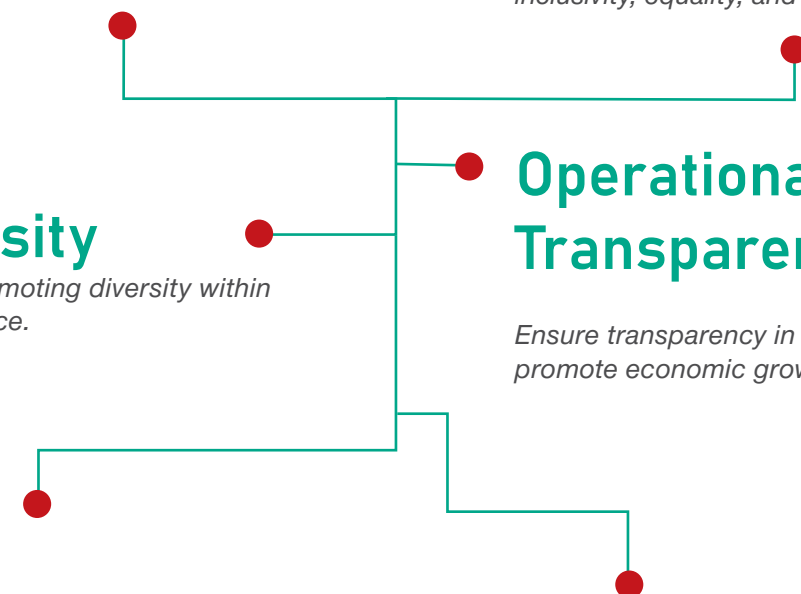
Ensure transparency in supply chains and promote economic growth in communities.

## Skill Development

We provide employees with access to training modules, facilitate job rotation, and expose them to critical assignments to support their career growth.

## Mentorship

Recruits are paired with mentors who can assist them in seamlessly transitioning into our organisation.





## ● We place utmost value on Governance

### Our take on governance

*Isgec has always worked to build trust with shareholders, employees, customers, suppliers, and other stakeholders through good governance principles. By consistently enhancing and retaining stakeholder trust, Isgec fosters strong, reliable relationships that underpin its commitment to excellence and integrity.*

*With a diverse board composed of experienced professionals and operational leaders, we ensure timely disclosures by consistently sharing information with the stock exchange and shareholders and strictly adhering to statutory and regulatory compliance across all our operations.*



“

**We create a space where people are stimulated by their work, are given avenues for career growth, and are encouraged to think out of the box.**





● The initiatives that keep us going

## Corporate Social Responsibility

“

At Isgec, we invest in our country & our planet’s future, making Education and Environment the core of our corporate social responsibility.

### Our strides in education

Isgec is dedicated to uplifting the communities around it. Today, we serve over 243 government schools in the Yamunanagar region- renovating ten buildings, constructing modern toilets for girls, and providing water coolers, green boards, and computers- to foster a conducive learning environment and reduce the female dropout rate in high schools. Isgec also partners with Nai Disha to provide vocational training, technical literacy, and open schooling opportunities to children from low-income families in the National Capital Region.

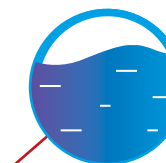
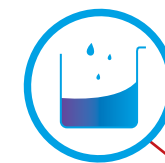
### We care for the environment

In tandem with its commitment to social upliftment, Isgec also champions several schemes for environmental conservation. Over the past five years, Isgec has placed over 128 5Kw solar panels generating 22,18,080 units of electricity, equivalent to saving approximately 1,545 tons of coal. Since 2019, Isgec has also installed 100 rainwater harvesting systems—collection pits, drainage pipes, and floor pavers—in over 51 government schools, conserving an impressive 32,00,61,000 L of water. Furthermore, Isgec has constructed 47 borewells in low-lying regions around Yamunanagar to address waterlogging issues that adversely impact crop stand. These borewells will expedite water drainage in the fields, safeguarding crops from torrential rains and floods.



100

rainwater harvesting systems in Haryana.



32 Cr. litres of

water conserved by our rainwater harvesting systems since 2019.

128

solar power systems installed in Haryana.



1,545 Tn. of coal

consumption was prevented by our solar power panels since 2018.

47

borewells constructed in low-lying regions around Yamunanagar, Haryana.



243

schools renovated in Haryana.

8

outdoor gymnasiums constructed.



“

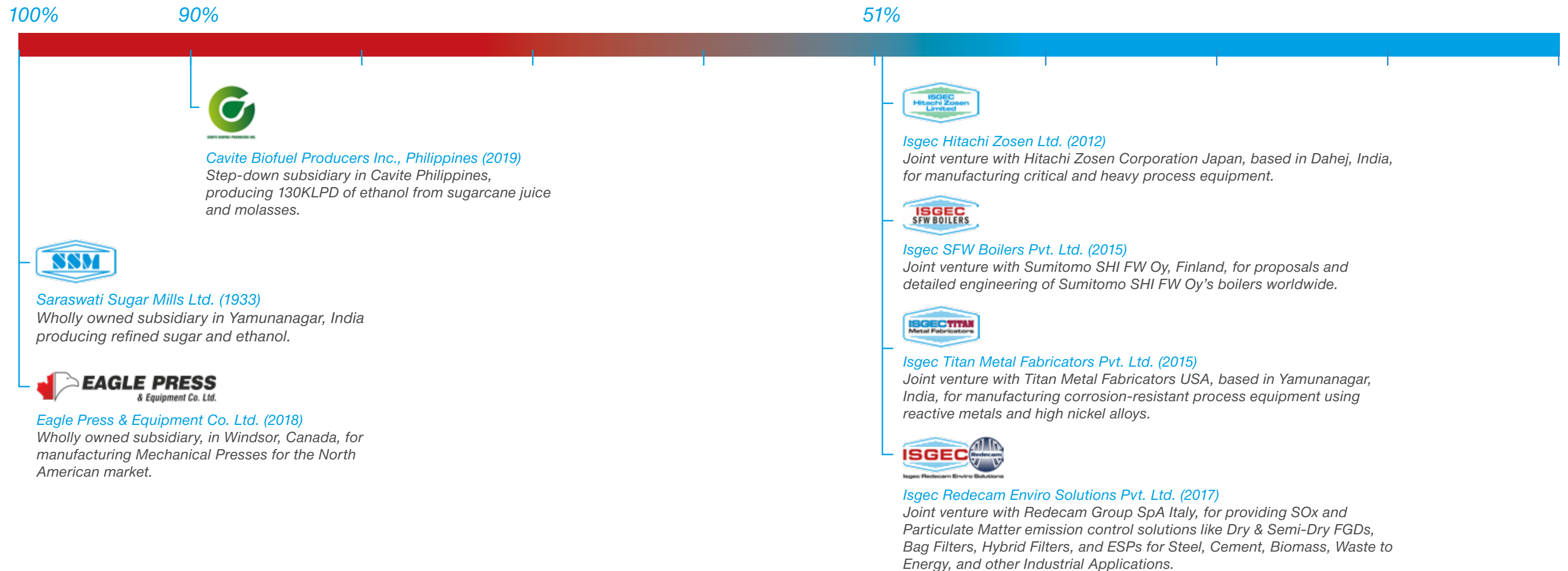
A prerequisite for sustainable economic development is that the nation invests in building its human capital & safeguarding the environment.



## • Our Joint Ventures & Subsidiaries

“

We partner with world-renowned, technology-driven companies to give our customers an expanded portfolio of cutting-edge products.





## Sectors We Cater To



### A. Automotive Industry

1. Iron Castings
  - Tool & Die Castings
2. Presses
  - Hydraulic Presses
  - Mechanical Presses



### B. Cement

1. Air Pollution Control Solutions
  - Bag Filters
2. Captive Power Plants
  - Boilers
  - Waste Heat Boilers
3. Contract Manufacturing
  - Gear Box Housing
  - Raw Mill Stand
4. Steel Castings
  - Bearing Block - VRM
  - Bearing Cap - VRM
  - Girth Gear
  - Grinding Table Casting - VRM
  - Journal Head Casting
  - Kiln Tyre/Live Rings
  - Thrust Roller
  - Weld Neck Flange



### C. Chemicals

1. Boilers
  - Fired & CFB Boilers
  - Waste Heat Boilers
2. Captive Power Plants
3. EPC Projects
4. Iron Castings
  - Cast Iron Carbonation Tower
  - Castings for Pre-heater & condenser for Soda Ash
  - Sulphonator Vessel for Dye Shift
5. Pre-fabricated Piping Spools
6. Process Equipment
  - Columns

- Pressure Vessels
  - Reactors
  - Shell & Tube Heat Exchangers
7. Skids & Modules



### D. Defence

1. Contract Manufacturing
  - Components of Howitzer Guns
  - Components of Under Water Platforms
  - Mobile Missile Launchers
  - Trestles for Ship Yards



### E. Fertilizers

1. Air Pollution Control Solutions
  - Bag Filters
2. Process Equipment
  - Ammonia Converter
  - Ammonia Converter Internals
  - Carbamate Condensers
  - HP Heat Exchangers
  - HP Urea Strippers
  - Methanator
  - Shift Reactors
  - Urea Hydrolyzers
  - Waste Heat Boilers



### F. Green Energy

1. Boilers
  - Biomass Boilers
  - Waste Heat Recovery Boilers
2. EPC
  - CBG Plants
  - Ethanol Plants
3. Process Equipment
  - Ammonia Converters
  - Internals

- Misc. Pressure Vessels & Shell & Tube Heat Exchangers
- Reactors



### G. Hydro

1. Contract Manufacturing
  - Butterfly Valves
  - Castings Chequered Support Plate Assembly
  - Cast Iron Castings for Ammonium Sulfate unit
  - Nozzle & Diffacher Assembly
  - Rotor Spiders
  - Upper & Lower Brackets
  - Valve Disc
2. Steel Castings
  - Air Valve Boss
  - Bearing Block
  - Bearing Hub
  - BFV Door Trunnion Side
  - Body Bearing Block
  - Body Upstream Split Flange
  - Crank Lever
  - Cross piece
  - Downstream Body
  - Fixed Labyrinth
  - Flange Manhole Boss
  - Francis Runner
  - Guide Vane
  - Hub Casting
  - Kaplan Blade
  - Kaplan Hub
  - Level Hub
  - Lever Boss
  - Lower Ring
  - Nose Cone
  - Nozzle Head
  - Outer Body
  - Pelton Runner
  - Runner Crown
  - Protection Roof
  - Rotating Labyrinth
  - Rotor
  - Rotor Trunnion Block
  - Runner Band
  - Runner Blade
  - Runner Chamber
  - Runner Hub
  - Spherical Valve Body
  - Throat Ring
  - Trunnion Block

- Trunnion Valve Disc Hub RH/LH
- Upstream Body
- Upstream Weldneck Flange
- Valve Body Hub RH /LH
- Valve Disc Boss
- Volute Ring
- Wicket Gate
- Wrg.Ring Bottom Ring
- Wrg.Ring Head Cover



### H. Mining

1. Contract Manufacturing
  - Highwall Mounting Equipment
2. Iron Castings Support Roller Bearing Block Casting
3. Steel Castings
  - Bottom Shell CH540
  - Bracket Casting
  - Bracket Casting
  - Centre Lip
  - Dipper Lip
  - Head Centre CH540
  - Head Centre
  - Head Centre
  - Lip Cheek (RH+LH)
  - Main Frame Casting for Crusher
  - Mill Head for Ball Mills
  - Sheave
  - Top Shell



### I. Nuclear Power

1. Contract Manufacturing
  - Claundria Vault Top Hatch Beam & Deck Plate Assembly
2. Process Equipment
  - Pressure Vessels
  - Shell & Tube Heat Exchangers



### J. Oil & Gas

1. Process Equipment
  - Distillation Columns
  - High Pressure & Low Pressure Separators
  - Mercury Absorbers

- Pressure Vessels
  - Shell & Tube Heat Exchangers
  - Slug Catchers
2. Pre-fabricated Piping Spools
  3. Skids & Modules



### K. Oil Refinery & Petrochemicals

1. Boilers
  - CFBC Boilers
  - CO2 Boilers
  - Oil & Gas Fired Boilers
  - Package Boilers
2. Distillation Columns
3. EPC Packages
4. H.P. Cold & Hot Separaters
5. Iron Castings
  - Compressor Castings
6. Pre-fabricated Piping Spools
7. Pressure Vessels
8. Process Equipment
  - Reactors
  - Shell & Tube Heat Exchangers
    - Breach Lock Closure Type
    - Helical Heat Exchangers
    - TEMA Type
9. Skids & Modules
10. Steel Castings for Pumps



### L. Paper

1. AFBC, CFBC Boilers
2. Boiler Pressure Parts
3. Cast Iron
  - Press Roll Assemblies



### M. Ports

1. Ship Loading & Unloading Systems



### N. Railways

1. Coach Factories
2. Metro Depots



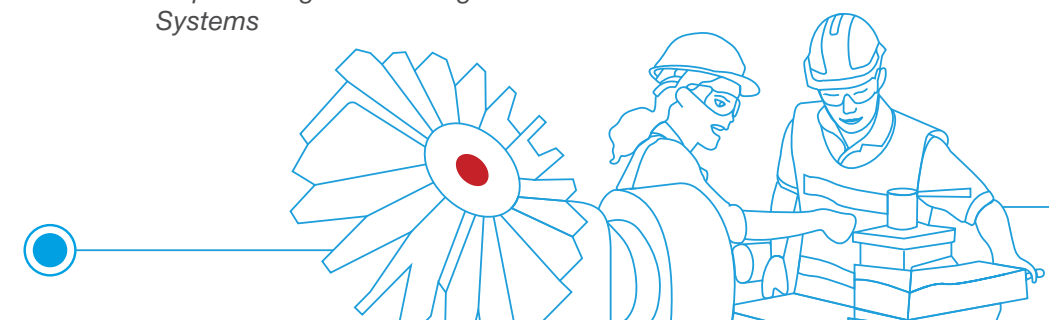
### O. Space

1. Contract Manufacturing
  - Bowl Cleaning Machine
  - Thrust Measurement System



### P. Steel

1. Air Pollution Control Solutions
  - Bag Filters
2. Captive Power Plants
  - Boilers
  - Waste Heat Boilers
3. Contract Manufacturing
  - Caster Segments
  - Coiling Machine
  - Continuous Caster
  - Cooling Stacks
  - Dewatering Drums
  - Drive & Tipping Stations
  - Laddle
  - LD Converter
  - Material Hopper
  - Palletising Disc
  - Transfer Cars
  - Tundish
  - Turret
4. Steel Castings
  - Choks Steel Castings
    - Chocks
    - Guide Casting
    - Hopper
    - Hot Coiler Drum
    - Knife Holder
    - Mill Housing
    - Stripper Plates
    - Stripper WR.Top & Bottom





## Sectors We Cater To



### Q. Thermal Power

#### 1. Air Pollution Control

##### Solutions

- Bag Filters
- Combustion Modification
- Dry Sorbent Injection Units
- Electrostatic Precipitators
- Wet Flue Gas Desulfurization Unit

#### 2. Boilers

- CFB & Fired Water Tube Boilers

#### 3. Boiler Pressure Parts

##### Including Spares

- Operations & Maintenance

#### 4. Contract Manufacturing

- End Shield
- Fabricated Steam Turbine Castings
- Outlet Valve
- Pulverisor Housing
- Stator Frame
- Steel Castings - Steam Turbine Casings
- Wind Boxes

#### 5. EPC of Complete Captive Power Plants

#### 6. HRGs

#### 7. Iron Castings

- Ductile Iron Blade Carrier
- Ductile Iron Bearing Housing Steam Turbine

#### 8. Miscellaneous Packages

- Water Treatment Plant
- ZLD Units

#### 9. Material Handling Packages

- Ash Handling Plants
- Coal Grinding Mills
- Coal Handling Plants

#### 10. Pre-fabricated Piping Spools

#### 11. Process Equipment

- HP & LP Heaters
- Steam Surface Condensers

#### 12. Skids & Modules

#### 13. Steel Castings

- Adapter-Extraction Valve (UP+LP)
- Aux.Valve Body
- Balance Piston Gland
- Bearing Cap
- Bearing Housing (UH+LH)

- Bearing Support
- Bend
- Blade Carrier (UH+LH)
- Bleeder Casing Base & Cover
- Bracket
- Bypass Chamber (UP+LP)
- Casing Cover
- Casing Casting
- Comp.Adjusting Ring
- Comp.Discharge Casing
- Compressor Casing (UH+LH)
- Compressor Cylinder
- Control Valve Body
- Control Valve Casing
- Deflector UP+LP
- Diaph.Blade Carrier
- Diaph.Wheel Carrier (UP+LP)
- Discharge Casing (UH+LH)
- Discharge Nozzle
- Dishcharge Diaphragm
- ESV & CV Casing
- ESV Body
- Exhaust Casing (UH+LH)
- Exhaust Elbow
- Exhaust Hood
- External Casing (UP+LP+VB)
- Front Casing (UP+LP)
- Gland Housing
- Guide Blade Carrier
- Half Diaphragm
- Head Frame
- Head Outer
- Housing & Inlet Section
- HP Turbine Casing (UH+LH)
- HP/IP Outer Casing
- Inlet Casing
- Inner Casing (UH+LH)
- Intake Nozzle
- Integral Volute
- IP Blade Carrier
- IP Inner Casing (UP+LP)
- IP Outer Casing
- LP Casing (UH+LH)
- Nozzle Casing
- Nozzle Chamber
- Nozzle Housing (UH+LH)
- Outer Casing (Barrel Type)
- Outer Casing (UH+LH+SEV)
- Outer Casing (UH+LH+SVB)
- Stand (Pedestal)
- Steam Casing (UP+LP)
- Steam Chambers
- Turbine Adjusting Ring
- Turbine Bearing Casing
- Turbine Blade Carrier

- Turbine Casing
- Turbine Shell
- Valve Body
- Valve Casing
- Valve Chamber Cover
- Valve Chest
- Valve Cone
- Valve Cover
- Yoke Diffuser



### R. Waste-to-Energy

#### 1. Boilers

- CFB & Incineration Boiler

#### 2. Boiler Pressure Parts

#### 3. Gas Cleaning Section

#### 4. Material Handling Solutions

#### 5. Waste to Power Plants on EPC



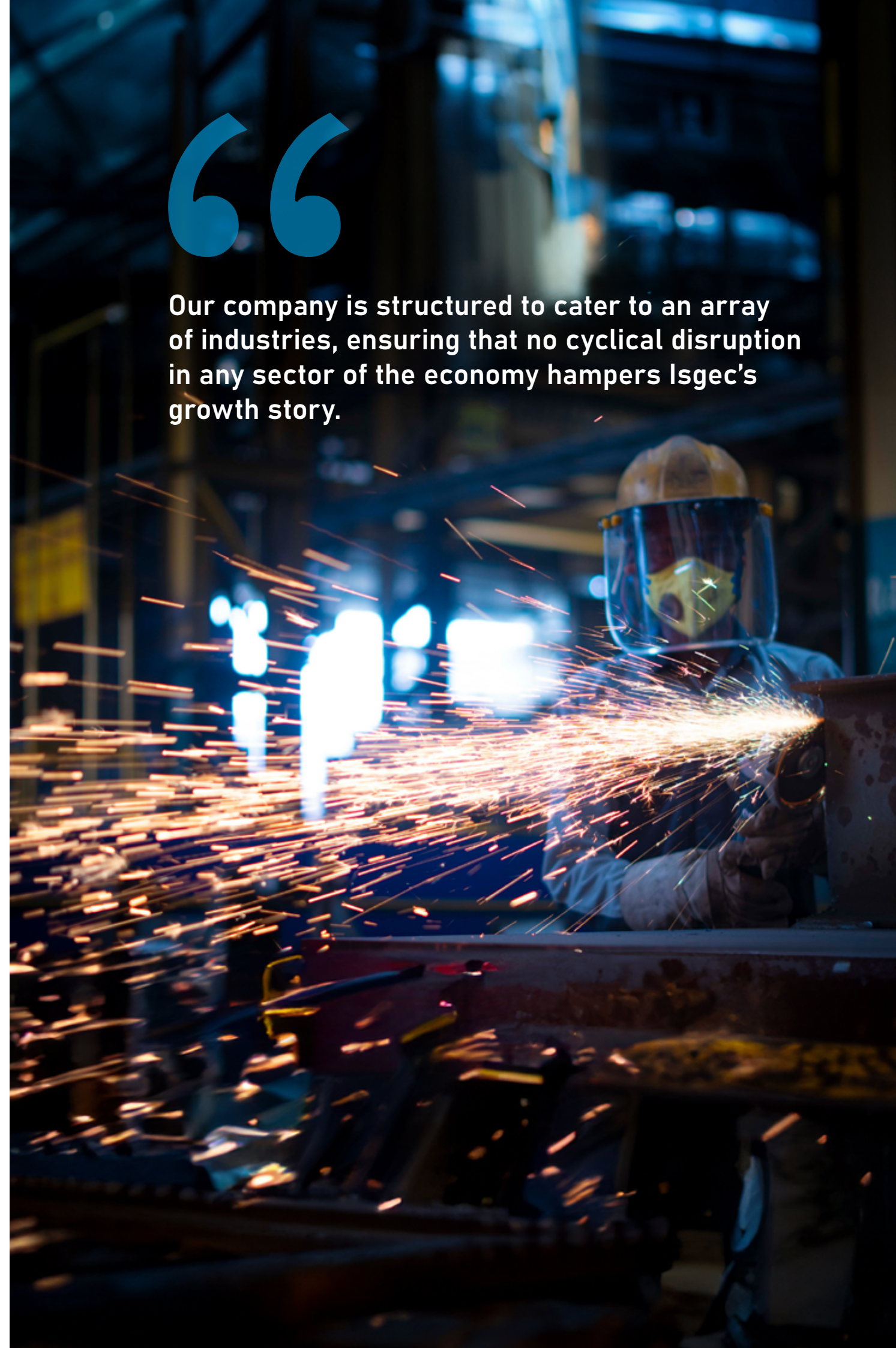
### S. Whitegoods

#### 1. Presses & Machine Tools

- Mechanical Presses
- Press Brakes

“

Our company is structured to cater to an array of industries, ensuring that no cyclical disruption in any sector of the economy hampers Isgec's growth story.





“

Providing our clients cutting edge,  
sustainable, & cost-effective  
engineering solutions through  
technology driven excellence in  
manufacturing & project execution.

● **BUILDING TODAY, TOMORROW**

*Engineering Solutions for a Better World*

*Isgec Heavy Engineering Ltd.*

*Head Office: A-4, Sector 24, Noida-201301, Uttar Pradesh, India*

*Phone: +91-120-4085001*

*Email: [corpcomm@isgec.com](mailto:corpcomm@isgec.com)*

*Website: [www.isgec.com](http://www.isgec.com)*

*Book Design & Photography*

*One Small Design Studio / [www.onesmall.in](http://www.onesmall.in)*

*©Isgec, 2024*

*All rights reserved. No part of this document to be reproduced, in print or web,  
without prior written permission of the publisher.*



**We are committed to  
premium quality &  
best technology.**





To know more about us,  
scan here

